

The Multi-Sensor and Multi-Temporal Dataset of Multiple Crops for In-Field Phenotyping and Monitoring

Yue Linn Chong^{1,2,*}, Julie Krämer³, Erekle Chakhvashvili³, Elias Marks^{1,2}, Felix Esser², Ansgar Dreier², Radu Alexandru Rosu⁴, Kevin Warstat³, Ralf Pude^{6,7}, Sven Behnke^{4,5}, Onno Muller³, Uwe Rascher^{3,6}, Heiner Kuhlmann², Cyrill Stachniss^{1,5}, Jens Behley^{1,2}, and Lasse Klingbeil²

¹Center for Robotics, University of Bonn, 53115 Bonn, Germany

²Institute of Geodesy and Geoinformation, University of Bonn, 53115 Bonn, Germany

³Institute of Bio- and Geosciences, IBG-2: Plant Sciences, Forschungszentrum Jülich GmbH, 52428 Jülich, Germany

⁴Department for Computer Science, University of Bonn, 53115 Bonn, Germany

⁵Lamarr Institute for Machine Learning and Artificial Intelligence, Germany

⁶Institute of Crop Science and Resource Conservation, Faculty of Agricultural, Nutritional and Engineering Sciences, University of Bonn, Germany

⁷Field Lab Campus Klein-Altendorf, Faculty of Agricultural, Nutritional and Engineering Sciences, University of Bonn, Germany

*corresponding author(s)

ABSTRACT

Phenotyping is crucial for understanding crop trait variation and advancing research, but is currently limited by expensive, labor-intensive monitoring. New phenotypic trait monitoring methods are being proposed to reduce this so-called phenotyping bottleneck via automation. These methods are often data-driven, requiring a dataset recorded with a specific sensor and corresponding reference values for developing novel methods. To this end, we present the MuST-C (Multi-Sensor, multi-Temporal, multiple Crops) dataset, which contains field data from various sensors collected over a growing season, covering six crop species. All data was georeferenced for alignment across sensors and dates. To collect our dataset, we deployed aerial and ground robotic platforms equipped with RGB cameras, LiDARs, and multispectral cameras, aiming to capture a wide variety of modalities and observations from different viewpoints. In addition to sensor data, we also provide manually collected leaf area index and biomass reference measurements. Our dataset enables the development of novel automatic phenotypic trait estimation methods, allows comparisons across different sensors, and generalizability across crop species.

Background & Summary

Agricultural systems need to meet the demands of a growing population while coping with climate change^{1,2}. The efficiency of sustainable agricultural systems can be increased through research and development of crop varieties that can both provide high yields and cope with climate impacts^{3,4}. Breeding such crop varieties and investigating innovative management methods requires assessing traits based on phenotypic measurements⁵. However, phenotyping is a time-consuming and laborious task that is still often performed manually using destructive measurements. The frequency of manual measurements is limited by labor costs, and the destructive nature of these measurements further increases resource requirements, as substantial plant material and plot area are needed. These limitations restrict the rate at which measurements can be generated, leading to slower breeding decisions³.

Moving towards high-throughput phenotyping of plants by automation⁶⁻⁹ is, therefore, a key stepping stone towards high temporal frequency, repeatability, and objectiveness of measurements for phenotypic trial experiments. The development of innovative high-throughput phenotyping methods using mobile sensing is enabled by the availability of domain-specific data under real-world conditions. While some real-world agricultural field datasets are available¹⁰⁻¹², these datasets often only represent a single growth stage, crop, or sensor type and are not developed for reusability. Thus, currently, we cannot directly compare different approaches that use different sensor modalities, study the effects of various growth stages on the performance of developed methods, or investigate the capabilities of developed approaches on multiple crops or sensors.

We fill this gap by providing a multi-sensor, multi-temporal, multi-crop (MuST-C) dataset (c.f. Fig. 1) to support research in high-throughput phenotyping by accelerating the development of algorithmic approaches for phenotypic trait estimation. To this end, we performed measurements using different sensing modalities, including RGB cameras, multispectral cameras,

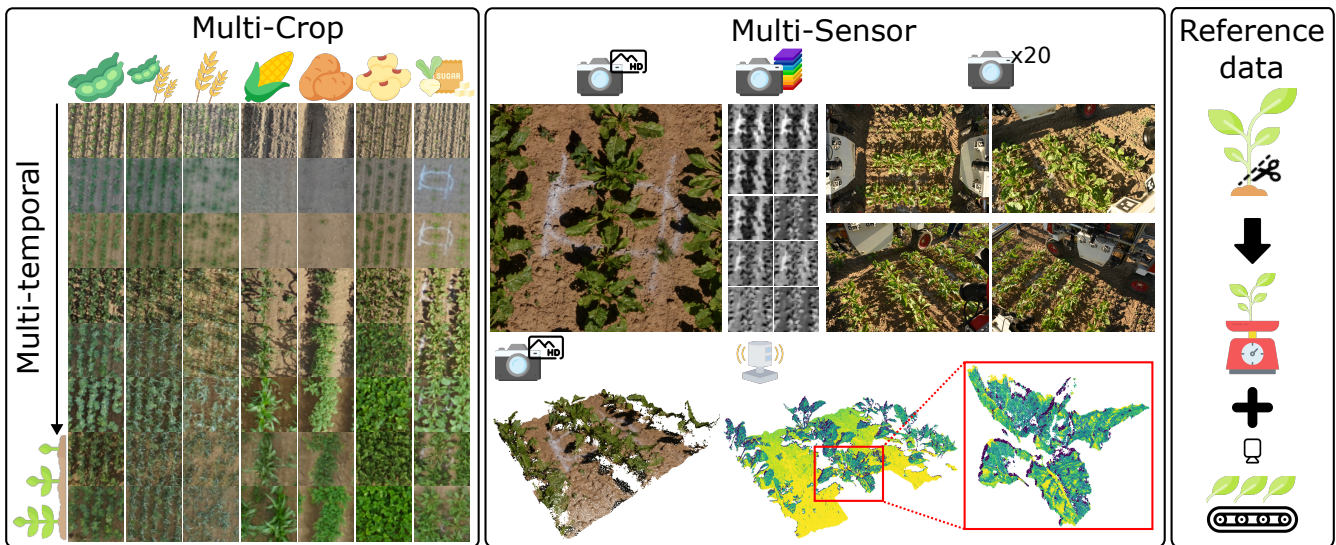


Figure 1. Overview of our dataset, comprising a field trial with multiple crops, with sensor data collected at several time points. We collected data using multiple sensors; here, we showcase our georeferenced data, showing the same location in a sugar beet plot across multiple sensors in the middle section. From top left, we show the data from RGB orthophotos, multispectral orthophotos, four of the 20 RGB instantaneously captured images, a colored dense point cloud from RGB structure-from-motion, and the high-resolution LiDAR point cloud (highlighted in red, we showcase the detailed point cloud of a single plant). With our georeferenced data, we can align data from different sensors and dates. In addition, we provide destructive reference measurements for aboveground fresh weight and LAI for the field trials.

40 and range measurements from light detection and ranging (LiDAR) sensors, over multiple growth stages on a field trial with
 41 multiple crops. We mounted the sensors on robotic platforms, i.e., unmanned aerial vehicles (UAVs) and unmanned ground
 42 vehicles (UGVs), equipped with global navigation satellite system (GNSS) receivers for georeferencing, which enabled us
 43 to provide the data in the same reference frame such that all data is aligned across sensors and over time. To evaluate newly
 44 developed approaches, we provide reference data acquired with conventional measurements of plant traits, specifically, the
 45 biomass and the leaf area index (LAI). We measured the LAI using a hand-held commercial canopy analyzer (i.e., SunScan
 46 canopy analysis system), and validated the measurements with destructive measurements using the WinDIAS leaf area meter.
 47 In addition to LAI^{13,14} and biomass estimation¹⁵, our MuST-C dataset is useful for addressing other tasks, such as crop-weed
 48 segmentation¹⁶, plant counting^{16,17}, leaf counting^{18,19}, vegetation index retrieval, plant height²⁰, and leaf angle distribution⁷.
 49 Furthermore, additional tasks that our dataset supports include plant reconstruction²¹, plant density estimation²², vegetation
 50 segmentation^{23,24}, or radiation use efficiency estimation³. In line with growing interest in foundation models^{25–28}, our data can
 51 be used for self-supervised pretraining foundation models for agricultural applications, such as weed semantic segmentation⁹,
 52 disease detection²⁹, or 3D reconstruction¹². Our dataset provides the novelty of aligned data from multiple sensors, possibly for
 53 comparison and development of novel methods from different sensor modalities, including sensor fusion approaches.

54 Methods

55 Experimental Design

56 Fig. 2 shows an orthophoto of the field trial, located at the Campus Klein-Altendorf research facility, University of Bonn,
 57 Germany (50°37' North, 6°59' East). The study site soil was classified as Haplic Luvisol, with a loamy siltic texture, and had
 58 high nitrogen levels (100 kg total available Nitrogen per hectare) in the plow layer, decreasing in the subsoil. The crops were
 59 cultivated in rectangular plots of 7.5 m by 6 m. The field experiment spanned one growing season in the spring of 2023; Tab. 1
 60 shows the sowing and harvest dates for each crop. We report weather data collected from a Campbell Scientific environmental
 61 station equipped with a CS310 quantum sensor, a ClimaVUE50 weather sensor, and a CS655 soil moisture sensor (Campbell
 62 Scientific, Logan, UT, USA).

63 Our multi-crop field trial consists of six sub-experiments, comprising five monocultures: (i) sugar beet (*Beta vulgaris* L.),
 64 (ii) spring wheat (*Triticum aestivum* L.), (iii) sweet corn (*Zea mays* L.), (iv) soybean (*Glycine max* L.), and (v) potato (*Solanum*
 65 *tuberosum* L.) as well as a wheat-faba bean (*Vicia faba* L.) intercrop, i.e., where wheat and faba bean crops are sown in the
 66 same plot.

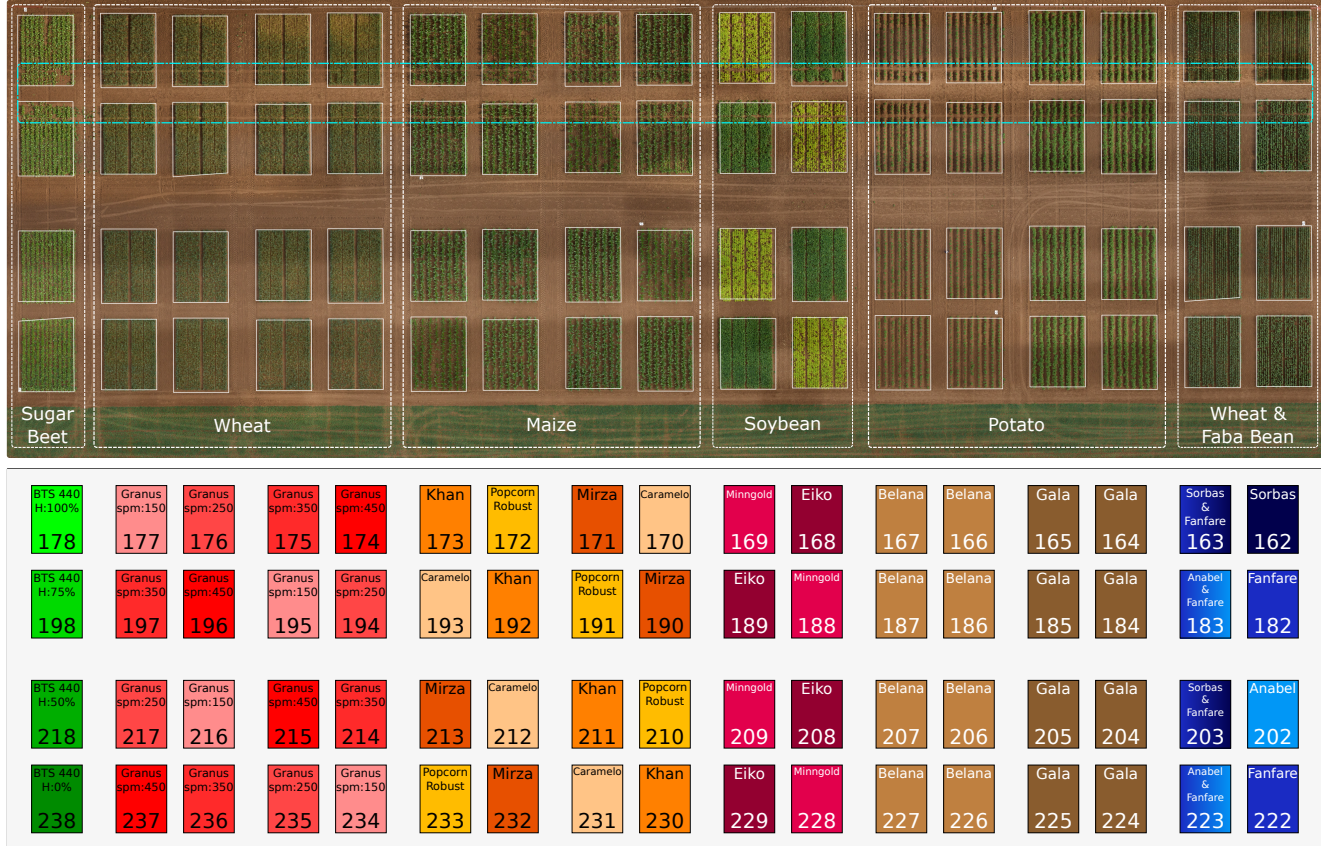


Figure 2. Orthophoto of the field trial area (top) and field trial layout (bottom). In the orthophoto, we denote the area of each species with white dashed lines. We designated an area for destructive measurements, shown here in light blue. In the field layout, we show the plot ID (bottom) and crop genotype (top) for each plot. We color-coded the plots based on the crops with sugar beets in green, wheat in red, maize in orange, soybean in pink, potato in brown, and intercrops in blue. For sugar beet plots, we mark the herbicide levels. For the wheat plots, we mark the seed density in seeds per square meter.

Species	Sowing Date (week #)	Harvest Date (week #)
Sugar beet	05.05.2023 (18)	N.A.
Wheat	25.04.2023 (17)	23.08.2023 (34)
Maize	18.05.2023 (20)	16.10.2023 (42)
Soybean	05.05.2023 (18)	11.10.2023 (41)
Potato	19.05.2023 (20)	27.09.2023 (39)
Wheat and faba bean intercrop	02.05.2023 - 03.05.2023 (18)	22.08.2023 - 22.08.2023 (34)

Table 1. Sowing dates and harvest dates of each species. We harvested the sugar beets at a later date after the duration of this dataset’s development.

Sensor	Data Package	Sensor Name	Sensor Manufacturer	Products	Resolution
RGB Camera (high resolution)	UAV1-RGB	PhaseOne iXM-100 RGB camera	PhaseOne, Copenhagen, Denmark	images, orthophotos, point clouds	11664×8750 px; 10 ⁵ pts m ⁻²
LiDAR	UAV2-LIDAR	RIEGL miniVUX-SYS	RIEGL Laser Measurement Systems GmbH, Horn, Austria	point clouds	10 ³ pts m ⁻²
RGB Multispectral	UAV2-RGB UAV3-MS	Sony α 7R RedEdge-MX Dual Camera System	Sony, Tokyo, Japan AgEagle Sensor Systems Inc., Wichita, KS, USA	images, orthophotos images, orthophotos	17320×6046 px 1280×960 px
RGB (20 cameras)	UAV3-RGB UGV-RGB	Sony α 7R Nikon Z7 (20 cameras)	Sony, Tokyo, Japan Nikon Corporation, Tokyo, Japan	images, orthophotos images	6240×4160 px 8256×5504 px
Laser Triangulation Scanner	UGV-LMI	LMI Gocator 2490 laser triangulation scanners	LMI Technologies, Burnaby, Canada	point clouds	10 ⁶ pts m ⁻²
LiDAR	UGV-Ouster	Ouster OS1	Ouster, Inc., San Francisco, CA, USA	point clouds	10 ⁴ pts m ⁻²
Non-destructive LAI	md_SunScan	SunScan Plant canopy analyzer	Delta-T Devices Ltd., Cambridge, UK	LAI	N/A
Destructive LAI	md_Destructive_LAI	WinDIAS Leaf Image Analysis System	Delta-T Devices Ltd., Cambridge, UK	LAI	N/A
Biomass	md_Biomass	N/A	N/A	Aboveground fresh weight	N/A

Table 2. The data types in our dataset. We collected five modalities with robotic platforms and manually collected LAI and biomass reference measurements. We collected all the data in the same field trial. We report the image resolution for RGB and multispectral sensors and report the approximate points per square meter for the point clouds provided.

67 In the sugar beet experiment, we tested different herbicide concentrations applied on the variety BTS 440: (i) 0% (no
68 herbicide), (ii) 50%, (iii) 75%, and (iv) 100% of the amount used following standard agricultural practice of herbicide application.
69 Sugar beet plants were sown on different dates for each column of plots to study the earlier stages of development. In the
70 wheat experiment, we tested the wheat of the Granus variety with four sowing densities: (i) 150 seeds m⁻², (ii) 250 seeds m⁻²,
71 (iii) 350 seeds m⁻², and (iv) 450 seeds m⁻². The experiment followed a randomized complete block design with four replicates
72 ($n = 4$) allocated to the plots. In the sweet corn experiment, we tested four varieties (Khan, Popcorn Robust, Mirza, and
73 Caramelo), while in the soybean trial, we tested two varieties (Eiko and Minngold). Both experiments followed a randomized
74 complete block design with the replication $n = 4$ allocated to the plots. We planted two varieties of potatoes (Belana and Gala)
75 using a two-block design. We managed the five monoculture trials conventionally, following standard agricultural practice
76 in the region. In the wheat-faba bean trial, we compared organically grown intercrops with their respective monocultures as
77 controls. The monocropped wheat was sown at 320 seeds m⁻² and monocropped faba bean were sown at 36 seeds m⁻². The
78 intercrops were established as a 1:1 cereal-legume mixture using half of the monocrop sowing density per crop. We tested two
79 mixtures: (i) Fanfare (faba bean) with short-growing Anabel (spring wheat) and (ii) Fanfare with tall-growing Sorbas (summer
80 wheat). No fertilizers or herbicides were applied in this trial to mimic organic farming practices. The experiment was arranged
81 in a two-block design: one block contained the mixture treatments (each with two replicates), while the second block was
82 assigned to the mono-crop treatments (two replicates for faba bean and no replication for spring wheat).

83 UAV and UGV Data Acquisition and Processing

84 We collected data from the aforementioned field experiment using different sensor modalities equipped on three different UAVs
85 (UAV1, UAV2, and UAV3) and a UGV. Tab. 2 shows a complete summary of our data products, Tab. 3 shows the platforms
86 used in our measurement campaign, and Tab. 4 shows the weeks and crops for each data package. In the following, we describe
87 the different sensors and the collected data.

88 UAV1 High-Resolution RGB Images (UAV1-RGB)

89 Fig. 3 shows the UAV setup and products for **UAV1-RGB**. We collected high-resolution RGB images (11664×8750 pixels) in
90 nadir view, i.e., where the camera points directly below, perpendicular to the ground. The captured images had a 70% overlap
91 on the sides and a 74% overlap frontally. We flew UAV1 at an altitude of 21 m, to obtain images with a ground sampling
92 distance of approximately 1 mm. Using the Agisoft Metashape Pro software package, we performed structure from motion
93 via bundle adjustment initialized with RTK poses, aligned using ground control points (GCPs), and subsequently obtained a
94 photogrammetric point cloud and an orthophoto for each collection date.

Platform	UAV1	UAV2	UAV3	UGV
Name	DJI Matrice 300 RTK (M300)	DJI Matrice 600 PRO (M600)	DJI Matrice 600 PRO (M600)	Thorvald II + custom aluminum housing
Manufacturer	SZ DJI Technology Co., Ltd., Shenzhen, China	SZ DJI Technology Co., Ltd., Shenzhen, China	SZ DJI Technology Co., Ltd., Shenzhen, China	Saga Robotics, Oslo, Norway
GNSS	RTK (built-in)	RTK (built-in) + Applanix APX-20 IMU + Applanix AV14 GNSS	RTK (built-in)	multi-GNSS and SBG Ellipse D IMU
Altitude	21 m	30 m	25 m	N/A
Flight plan	lawnmower pattern (perpendicular to the field plots)	cross-flight pattern (15 m side distance)	lawnmower pattern (parallel to the Sun's trajectory)	N/A

Table 3. UAVs and UGVs used for data collection. Further details about the UGV can be found in our prior publication³⁰.

Week #	UAV1-RGB	UAV3-MS + UAV3-RGB	UAV2-Lidar + UAV2-RGB	UGV-LMI	UGV-Ouster	UGV-RGB	md_SunScan	md_Destructive	md_Biomass
20	■●▲§⊙×	■●▲§⊙×	■●▲§⊙×	§					
21	■●▲§⊙×	■●▲§⊙×	■●▲§⊙×	■●▲§⊙×	■●▲§⊙×		●	●	●
22	■●▲§⊙×	■●▲§⊙×	■●▲§⊙×	■●▲§⊙×		■●▲§×	●×	■×	■×
23		■●▲§⊙×	■●▲§⊙×						
24	■●▲§⊙×	■●▲§⊙×	■●▲§⊙×	■●▲§⊙×	■●▲§⊙×	■●▲§×		■	■§
25	■●▲§⊙×		■●▲§⊙×	■●▲§⊙×	■●▲§⊙×	■●▲§×	■●▲§×	■●▲×	■●▲§×
26		■●▲§⊙×	■●▲§⊙×			■●▲§×	■●▲§×		
27	■●▲§⊙×	■●▲§⊙×	■●▲§⊙×	▲§⊙×			■●▲§×	■●▲	■●▲§×
28	■●▲§⊙×	■●▲§⊙×	■●▲§⊙×	■●§⊙×	■●▲§⊙				
29	■●▲§⊙×		■●▲§⊙×				■●▲§×	■●▲§×	■●▲§×
30			■●▲§⊙×	■●§⊙×	■●				
31			■●▲§⊙×						
32	■●▲§⊙×	■●▲§⊙×	■●▲§⊙×	■●§⊙×	■●		■●▲§×	§	▲§
33									
34		■●▲§⊙×	■●▲§⊙×	■●§⊙×	■●		■●▲§⊙		
35		■●▲§⊙×							
36		■●▲§⊙×							

Table 4. Calendar weeks where we collected data for each data package and crop species. Legend: ■: Sugar Beet, ●: Wheat, ▲: Maize, §: Soybean, ⊙: Potato, ×: Intercrop.

95 UAV2 LiDAR Point Clouds (UAV2-Lidar)

96 Fig. 4 shows the UAV setup and products for **UAV2-Lidar**. We outfitted the UAV2 with a RIEGL miniVUX-SYS consisting
97 of the RIEGL miniVUX-2UAV 2D laser scanner and the Applanix APX-20 inertial measurement unit (Applanix, Richmond
98 Hill, Ontario, Canada). We configured the LiDAR sensor to the laser pulse repetition rate of 200 kHz and the scan speed of
99 53.80 lines per second. For georeferencing, we used a reference station to estimate the GNSS baseline and performed pose
100 estimation using the Applanix POSPac software with the inertial measurement unit (IMU) and additional GNSS data. We
101 used the software RIEGL RiPROCESS for direct georeferencing, which combined the trajectory and LiDAR data, with strip
102 adjustment correction to improve the trajectory by using multiple flight strips. We filtered the LiDAR data by the maximum
103 range of 45 m, and the resulting georeferenced point cloud has a mean density of 1433 pts m⁻².

104 UAV2 RGB Images (UAV2-RGB)

105 In addition to the LiDAR data, we used the same UAV2 to simultaneously capture RGB data at 1.5 s intervals. We processed
106 the images using the Agisoft Metashape Pro to obtain the orthophoto of the field for each date, an example of which is shown
107 in Fig. 4. The orthophotos have a ground sampling distance of approximately 1 cm.

108 UAV3 Multispectral Images (UAV3-MS)

109 We collected multispectral images using UAV3, mounted with the multispectral cameras with 10 bands, detailed in Tab. 5.
110 The cameras point directly below, perpendicular to the ground, using the Ronin MX gimbal (SZ DJI Technology Co., Ltd.,
111 Shenzhen, China) to acquire images of the entire field trial with a ground sampling distance of 3 cm. Fig. 5 shows the UAV
112 setup and products for **UAV3-MS**. The UAV followed a lawnmower pattern, with an overlap of 90 % along the flight path and
113 65 % on the sides. To ensure valid orthophotos, we planned the flight campaigns on days with stable illumination conditions.

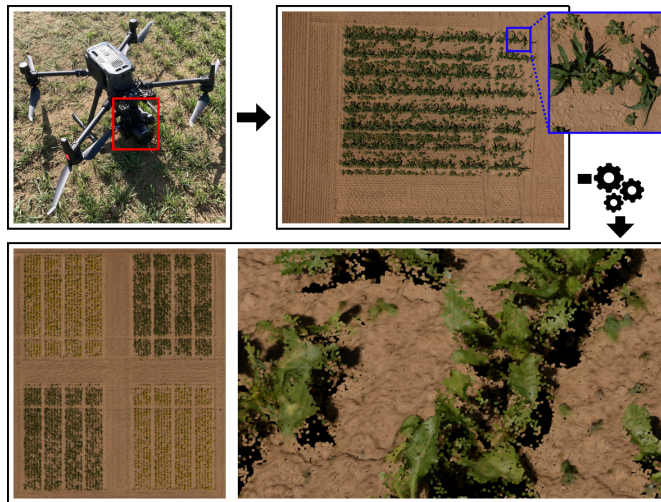


Figure 3. From the top left, the UAV setup consisting of the M300 with the PhaseOne camera (highlighted in red), which captured high-resolution images; the images have a large field of view, yet the small details are also visible (in blue). We performed structure from motion using these high-resolution RGB images and obtained a dense point cloud and an orthophoto.

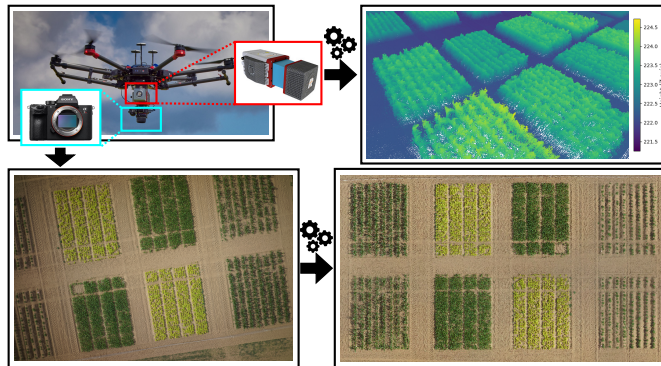


Figure 4. From top left, the UAV setup of the UAV2 with the RIEGL LiDAR (highlighted in red) and Sony RGB camera (highlighted in blue). We processed the data to obtain point clouds and orthophotos of the field.

114 We calibrated each orthophoto's reflectance with nine calibration panels with near-Lambertian surfaces and contrasting
 115 reflectance factors ranging from black to white, placed on the ground before each flight. Each panel has precisely defined,
 116 measurable reflectance values ranging from 2 % to 63 % reflectance. We placed the nine panels some distance apart to avoid
 117 adjacency effects of the panels (neighboring panels contaminating each other's reflectance). We put them on the bare soil to
 118 prevent the influence of the vegetation. We processed the raw multispectral images to radiance units³¹ and georeferenced them
 119 using ground control points using the Agisoft Metashape Pro software package to obtain the camera extrinsic calibration and
 120 multispectral orthophotos with the same resolution as the raw images. For accurate georeferencing, we recalibrated the camera
 121 poses using ground control points evenly distributed in the field trial. The exact location of each ground control point was
 122 measured using the GNSS Receiver HiPer VR (Topcon Positioning Systems, Inc., Tokyo, Japan), with a relative base error
 123 of 5 mm horizontally and 10 mm vertically; and additional distance-dependent error of 0.5 parts per million horizontally and
 124 0.8 parts per million vertically. We calibrated the multispectral reflectance orthophotos using the empirical line method³¹. In
 125 summary, **UAV3-MS** contains the multispectral images, camera calibrations, and multispectral reflectance orthophotos of the
 126 entire field for each collection date.

127 **UAV3 RGB Images (UAV3-RGB)**

128 In addition to the multispectral data of **UAV3-MS**, we also recorded RGB data during each UAV3 flight. We mounted an RGB
 129 camera on the same gimbal as the RedEdge and captured RGB images in sync with the multispectral images. From these RGB
 130 images, we obtained digital elevation models (DEMs) and orthophotos using the Agisoft Metashape Pro. The orthophotos have
 131 a ground sampling distance of approximately 3 cm, with an estimated overlap of approximately 80 % along the flight path and
 132 75 % to the sides. In summary, **UAV3-RGB** contains the RGB images, RGB camera calibrations, RGB orthophotos, and DEMs

Orthophoto Band	Name	Center Wavelength (nm)	Bandwidth (nm)
01	Costal blue	444	28
02	Blue	475	32
03	Green 1	531	14
04	Green 2	560	27
05	Red 1	650	16
06	Red 2	668	14
07	Red Edge 1	705	10
08	Red Edge 2	717	12
09	Red Edge 3	740	18
10	Near-infrared (NIR)	842	57

Table 5. Multispectral bands of the RedEdge-MX Dual Camera System used for UAV3-MS and their corresponding bands in our reflectance orthophotos.

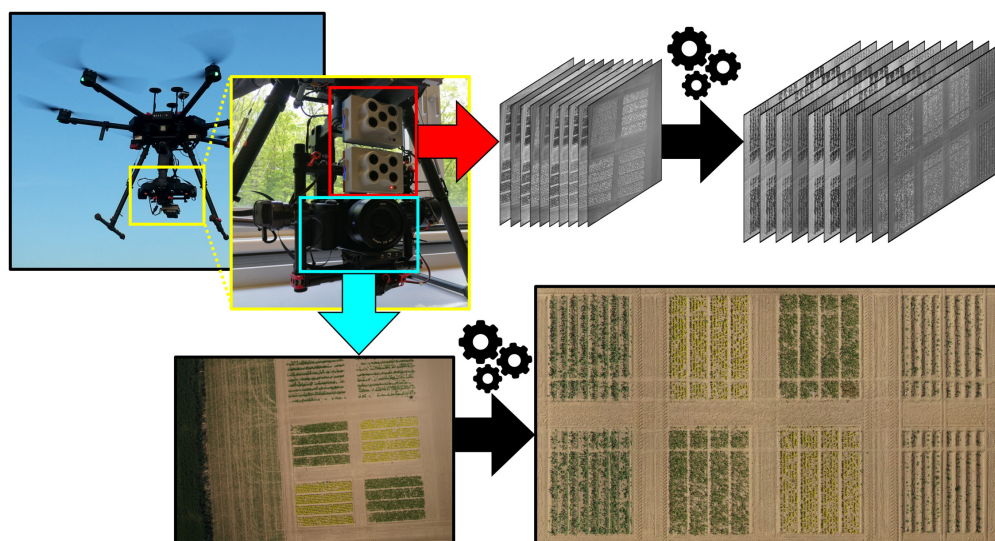


Figure 5. From top left, the UAV3 used to carry multispectral RedEdge cameras (in red box), which captured multispectral images (top middle). We processed the multispectral images to obtain orthophotos of the field trial with 10 reflectance channels. The same UAV also carried an RGB camera (highlighted in light blue), which captured RGB images during the same flight. We performed structure from motion with these RGB images to obtain an RGB orthophoto for each collection date.

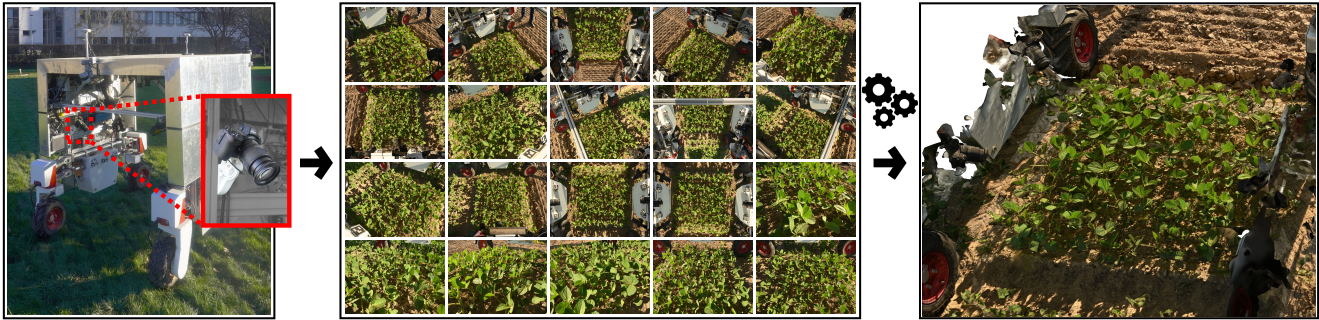


Figure 6. This figure shows the UGV (left) with the mounted cameras (one highlighted in red). There are 20 cameras mounted in the UGV, simultaneously capturing 20 images (middle). We used these images to perform structure from motion and obtained a 3D representation of the captured area (right).

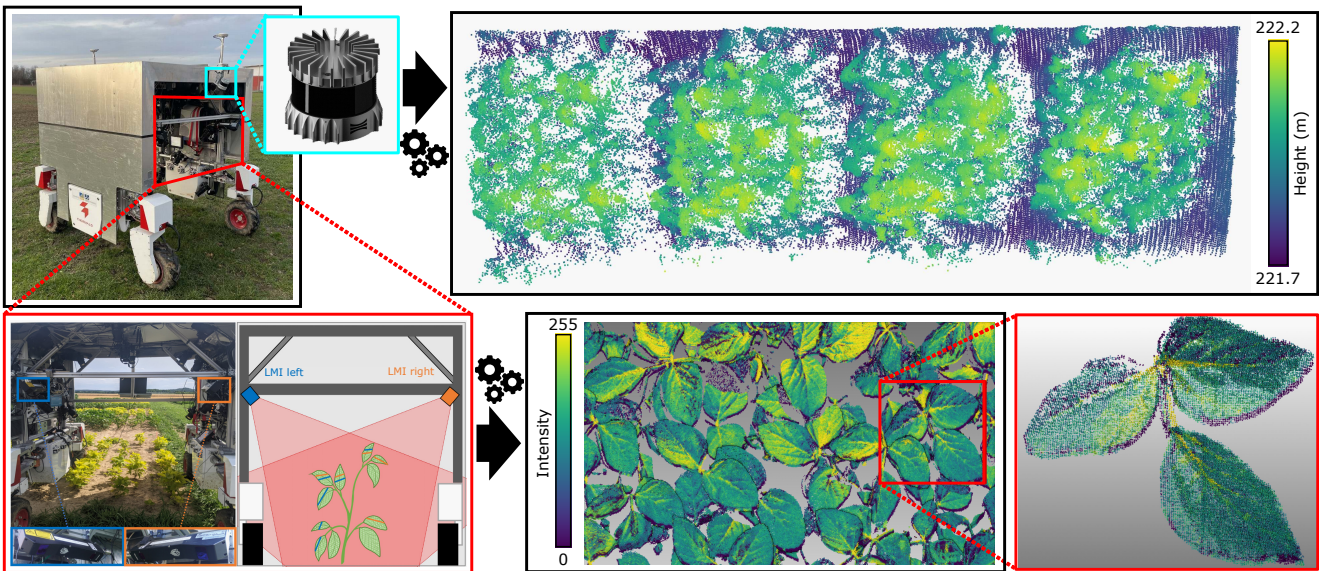


Figure 7. From top right, the UGV equipped with the Ouster LiDAR (highlighted in light blue), which we used to obtain a point cloud (top right). We also mounted the UGV with two LMI scanners, on the left and right (bottom left); the left LMI is highlighted in blue and the right LMI in orange. We mounted the two LMIs to have an overlapping field of view over the crop plants. We processed the LMI outputs to obtain a georeferenced dense point cloud (bottom middle). The point clouds have a high resolution, and individual plant organs are visible (bottom right, soy bean leaves manually cropped out).

133 for each collection date (Fig. 5).

134 **UGV RGB Multi-Cameras (UGV-RGB)**

135 Our UGV was equipped with 20 RGB cameras to capture images instantaneously, at the resolution of 45.7MP (8256×5504 px).
 136 We strategically positioned the cameras along the interior surfaces of the UGV and adjusted their zoom levels to capture the
 137 maximum crop area. A translucent plastic sheet was attached to the sides of the UGV to minimize motion artifacts by shielding
 138 the plants from wind and reducing harsh shadows caused by bright sunlight. The UGV followed the path along the area of
 139 destructive sampling shown in Fig. 2, and captured images of the field trial. We collected the multi-camera data at the lower
 140 growth stages and stopped when the canopy was too tall or crowded. For each day, we manually calibrated each camera’s zoom
 141 level based on the crop canopy height. Esser et al.³⁰ described the sensor setup in more detail. We sorted the sets of images
 142 based on the field plots. We calibrated the camera intrinsic and scaled extrinsics of each day using the Agisoft Metashape Pro.
 143 In summary, the **UGV-RGB** data package contains the sets of instantaneously captured 20 RGB images organized by plots and
 144 camera calibrations for each collection date. Fig. 6 shows the UGV and cameras, and an example set of 20 instantaneously
 145 captured images, which we used to generate a mesh.

Species	SunScan plot IDs	ELADP	Destructive LAI plot IDs	Biomass plot IDs
Sugar beet	178, 179, 198, 199	1.55	178, 198	178, 198
Wheat	174 - 177	0.96	174, 176	174, 176
Maize	170 - 173, 190 - 193	1.37	191, 192	191, 192, 172, 173
Soybean	168, 169, 188, 189	4.1	168, 169, 188, 189	168, 169, 188, 189
Intercrop	162, 163, 182, 183	0.96	162, 163, 182, 183	162, 163, 182, 183

Table 6. The plot IDs where we took SunScan measurements, the ELADP used to calculate LAI for SunScan, plot IDs where we took destructive LAI measurements, and plot IDs where we took destructive biomass measurements.

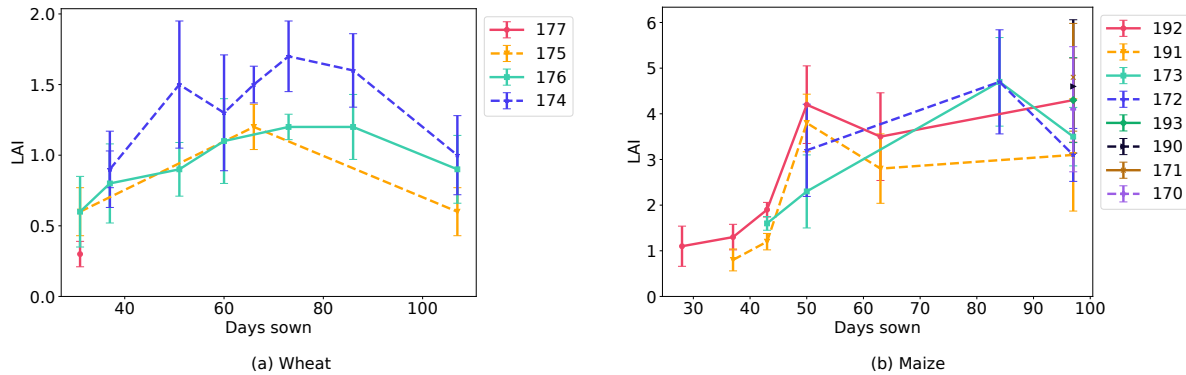


Figure 8. Example LAI from SunScan against the number of days since sowing and plot IDs of wheat and maize. The error bars for the SunScan LAI measurements indicate the minimum and maximum measurements.

146 **UGV LiDAR Point Clouds (UGV-LMI and UGV-Ouster)**

147 We mounted two LMI laser triangulation scanners and an Ouster OS1 64-beam LiDAR on our UGV. The two triangulation
 148 scanners, mounted on the left and right sides of the UGV, had an overlapping field of view, and the multi-beam LiDAR at the
 149 front of the UGV was angled downward. We drove the UGV across all plots in the field trial along the area of destructive
 150 sampling shown in Fig. 2.

151 For georeferencing, we interpolated the trajectory with respect to the laser data and transformed each laser profile from the
 152 scanners into a global coordinate frame (UTM, WGS84).

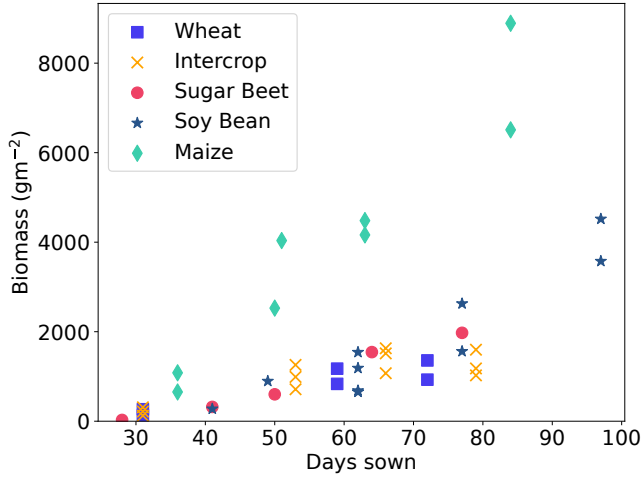
153 We performed the system calibration (i.e., the estimated transformation between the scanners and the inertial navigation
 154 system’s frame) using a 3D point feature approach³². With the calibrations, for each LiDAR (left LMI, right LMI, and Ouster),
 155 the sequences of point clouds were respectively merged into a single large point cloud, which was then cropped and organized
 156 by plot.

157 Each 3D point in the point clouds contains time (UTC) and laser intensity ranging from 0 to 255. The point clouds from
 158 the left and right scanners were not aligned to each other in the raw point clouds, and some misalignment between the two
 159 sensors may occur due to deformation (<10 cm) of the UGV when traversing uneven or soft ground. Therefore, we performed
 160 post-processing to merge the point clouds from the left and right LMIs using a custom plane-to-plane iterative closest point
 161 algorithm to obtain the final merged point clouds for the LMIs.

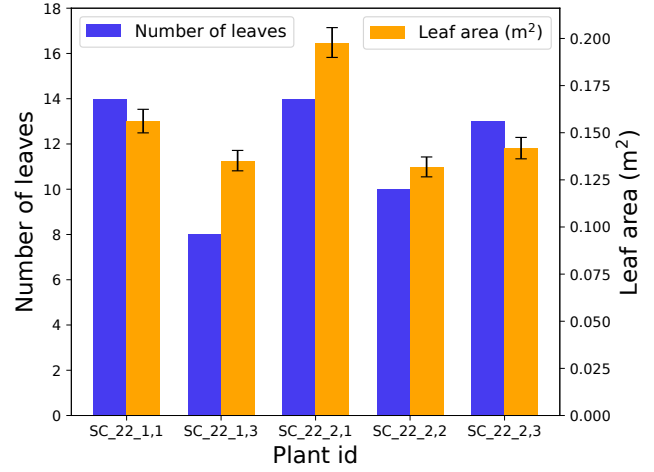
162 Fig. 7 shows the UGV setup and laser sensors used, as well as an example of an LMI point cloud (left and right scanner
 163 combined) for a soybean plot, and an example of the Ouster point cloud for a soybean plot; notice that the LMI point cloud has
 164 a higher density compared to the Ouster, where single plant organs are distinguishable with more detail. In short, **UGV-LMI**
 165 and **UGV-Ouster** respectively comprise one cropped point cloud for each plot and collection date.

166 **SunScan LAI Data Acquisition and Processing**

167 We took non-destructive LAI measurements with the SunScan Canopy Analysis System on the dates indicated in Tab. 4. All
 168 measurements were taken during midday (approximately between 12:00 and 15:30 local time), under mostly sunny conditions,
 169 and were repeated 10 times for the plots of sugar beet, wheat, maize, soybean, and wheat-faba bean intercrop trials of plots
 170 given in Tab. 6. The SunScan system consisted of an incoming light sensor and a probe. The incoming light sensor measured
 171 both direct and diffuse incoming radiation above the canopy and was placed on a tripod near the measurement area. The probe
 172 had 64 photosynthetically active radiation (PAR) sensors. We placed the probe diagonally below the canopy and spanning
 173 across multiple crop rows, in the center of the plot, to measure the under-canopy PAR. From the incoming light sensor and



(a) Biomass per meter (gm^{-2}) of different crops against days sown.



(b) Number of leaves and total leaf area (m^2) for each plant in a maize plot collected on 23.06.2023.

Figure 9. Example plots of biomass and LAI from destructive measurements. In (a), we show the range of biomass measurements obtained for multiple crops at various growth stages. In (b), we showcase the individual plant-level data from destructive measurements.

174 probe measurements, we calculated the LAI with the SunScan proprietary software, where we set the estimated leaf angle
 175 distribution parameter (ELADP) based on the crop species, as shown in Tab. 6. Fig. 8 shows the plots of the LAI of each crop
 176 species over time.

177 Destructive Biomass and LAI Data Acquisition and Processing

178 We measured the aboveground fresh weight of plants sampled destructively from the field trial from the designated area shown
 179 in Fig. 2, on dates indicated in Tab. 4, for selected plots listed in Tab. 6. We harvested the length of l_s , of $r_s \in \{4, 5\}$ rows of
 180 wheat and intercrops, respectively, and an area of approximately 1 m^2 for all other crops to obtain N_s plant individuals. We
 181 weighed each sugar beet and maize plant individually to record the biomass per plant. We avoided harvesting plants around the
 182 plot edges to minimize edge effects, and weighed the plants immediately after harvesting to obtain the biomass measurement m .
 183 Finally, we calculated the fresh weight of the aboveground biomass per meter m_{crop} (in gm^{-2}) of the plot with:

$$m_{\text{crop}} = \begin{cases} \frac{r_m}{r_s l_s} m, & \text{for crop} \in \{\text{wheat, intercrop}\} \\ \frac{N_m}{N_s} m, & \text{for crop} \in \{\text{sugar beet, maize, soybean}\} \end{cases}, \quad (1)$$

184 where r_m is the number of rows per meter of the plot, and N_m is the average number of plants per meter of the plot.

185 In addition, we measured destructive measurements of leaf area using the WinDIAS 3 image analysis system leaf scanner.
 186 These destructively obtained LAI measurements were used to validate the SunScan LAI measurements (see Technical Validation
 187 section). On dates indicated in Tab. 4 and for selected plots listed in Tab. 6, after measuring the biomass of the harvested
 188 samples, we separated a subsample of the plants to scan for leaf area. From these plants, we detached all leaves from the stems
 189 and scanned each leaf using the WinDIAS 3 leaf scanner, with an overhead camera that takes images at 4 Hz to obtain total leaf
 190 area A . We scanned each sugar beet and maize plant individually to record the leaf area per plant. We scaled the total leaf area
 191 A to estimate the LAI of the plot, where LAI is the unitless ratio of measured green leaf area in square meters to one square
 192 meter of ground surface³³ ($\text{m}^2 \text{ m}^{-2}$) with:

$$\text{LAI}_{\text{crop}} = \begin{cases} \frac{r_m}{r_s l_s} \frac{m}{m_w} A, & \text{for crop} \in \{\text{wheat, intercrop}\} \\ \frac{N_m}{N_s} A, & \text{for crop} \in \{\text{sugar beet, maize, soybean}\} \end{cases}, \quad (2)$$

193 where m_w is the biomass of the plants subsampled and scanned for LAI, l_s is the length of the rows harvested in meters. The
 194 destructive leaf area measurements have an accuracy of $\pm 4\%$, as reported by the WinDIAS manufacturer, but due to the scaling
 195 in Eq. (2), the calculated LAI is expected to have a poorer accuracy. Fig. 9 shows example graphical plots of the destructively
 196 measured biomass and LAI.

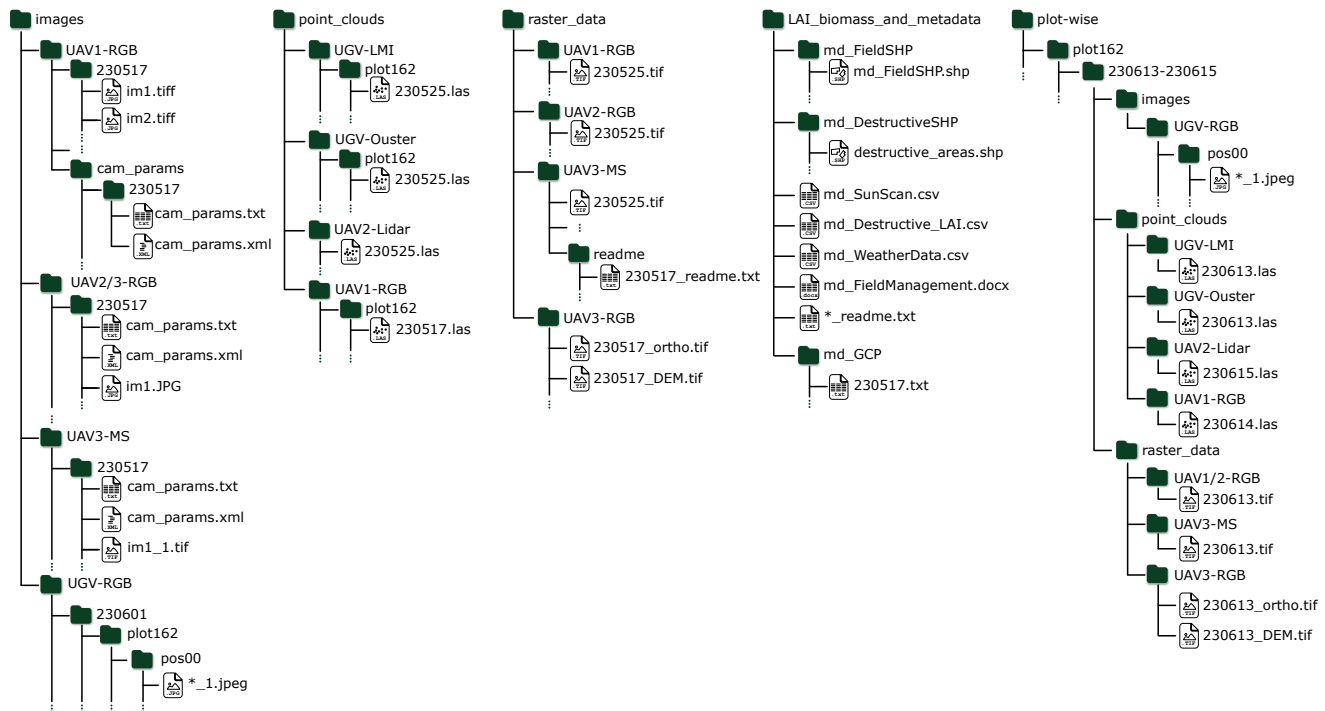


Figure 10. Directory tree structure of our dataset. We provide our data in two alternative organizational structures for the user to choose from. Firstly, we categorized all data packages according to their data type at the top level, i.e., images for raw image data, point_clouds for 3D data points, raster_data for orthophotos, and LAI_biomass_and_metadata for reference measurements and field data. Secondly, we provide an alternative organization of our data in the “plot-wise” directory for use cases that require plot-level analysis.

Data Records

The MuST-C dataset is available via our project webpage <https://www.ipb.uni-bonn.de/data/MuST-C/> or directly via the bonndata public access repository <https://doi.org/10.60507/FK2/OX9XTM³⁴>. Fig. 10 illustrates the directory tree structure of our data records. We provide our data in two formats to support different use cases. Firstly, we organized the data into four directories according to their data types: (i) images, (ii) point clouds, (iii) raster data, and (iv) reference measurements and metadata. Secondly, for users interested in plot-level data, we provide our data organized by plot in the “plot-wise” directory. Note that the information in both structures is duplicated; the users are free to choose the organization structure that best suits their use case.

The images directory consists of RGB and multispectral image files from **UAV1-RGB**, **UAV2-RGB**, **UAV3-RGB**, **UAV3-MS**, and **UGV-RGB**, with a child directory for each data package and a child directory for each date. For **UGV-RGB**, we organized the data into directories based on plots, and we sorted each set of 20 images into a directory, with each image filename following the nomenclature “nikon_<camera ID>.jpeg”. For the multispectral images of **UAV3-MS**, image filenames follow the nomenclature “IMG_<image ID>_<band ID>.tif”, following band IDs in Tab. 5. All camera calibrations were provided in the same directory as the images, in two alternative plain text formats, “cam_params.txt” and “cam_params.xml”.

The point clouds directory includes the LiDAR data (**UAV2-Lidar**, **UGV-LMI**, and **UGV-Ouster**) and the structure-from-motion dense point cloud of RGB images (**UAV1-RGB**). For **UAV1-RGB**, we provide the dense point cloud from bundle adjustment for each data collection date, which we cropped to follow the plots, resulting in a point cloud for each plot and date. For **UAV2-Lidar**, there is one cumulative point cloud of the whole field trial for each date, named “<YYMMDD>.las”. For **UGV-LMI** and **UGV-Ouster**, the point clouds are cropped to follow the plots, with the filenames of **UGV-LMI** merged point cloud files named according to their collection date “<YYMMDD>.las”. Similarly, for **UGV-Ouster**, the point cloud filenames follow the naming convention “<YYMMDD>.las”. The UGV point clouds are organized into directories by plot and by date.

Orthophotos from **UAV1-RGB**, **UAV2-RGB**, **UAV3-MS**, and **UAV3-RGB** are included in the raster data directory, with a child directory for each data package. For **UAV1-RGB** and **UAV2-RGB**, each orthophoto shows that the entire field trial for a given date is stored in a *.tif file format and named “<YYMMDD>_ortho.tif”. For **UAV3-MS**, each multispectral reflectance orthophoto was named “<YYMMDD>.tif”; refer Tab. 5 for the details of each band. For **UAV3-RGB**, in addition to the



Figure 11. GCP locations of UAV1-RGB (green), UAV2-RGB (blue), UAV3-RGB (yellow), and UAV3-MS (red), for each data collection date where the GCPs are visible. The GCP locations in the orthophotos are mostly aligned across sensors and different collection dates.

222 orthophotos, we also provide the DEM files following the filename nomenclature “<YYMMDD>_DEM.tif”.

223 The LAI_biomass_and_metadata directory contains metadata and reference measurements. **md_FieldManagement** reports
 224 the field management notes, **md_FieldSHP** contains the shapefiles with details on plot-level variabilities, and **md_WeatherData**
 225 includes data from the weather station. We also report additional measurements taken on the field, including LAI measurements,
 226 SunScan in **md_SunScan**, destructively measured LAI of each plot and leaf area per plant for sugar beets and maize in
 227 **md_Destructive_LAI**, fresh weight of the aboveground biomass for each plot (gm^{-2}) and for individual plants of sugar
 228 beets and maize (g) in **md_Biomass**, and GCP locations in **md_GCP**. The areas where we took the destructive measure-
 229 ments are denoted in the metadata **md_DestructiveSHP**. We included further metadata of images UAV3-MS, UGV-RGB,
 230 shapefiles (**md_FieldSHP** and **md_DestructiveSHP**), and csv files (**md_Biomass**, **md_Destructive_LAI**, **md_SunScan**, and
 231 **md_WeatherData**) in readme files located in their respective directories.

232 In the plot-wise directory, we provide a duplicate copy of our data, organized by plot, allowing users to download sensor
 233 data for specific plots of interest. The data of each plot is further organized by dates, with data from similar dates collated
 234 together. Under this organizational structure, we performed additional post-processing to crop out each plot area, providing
 235 plot-wise data. We also performed further post-processing on the point clouds of UAV2-Lidar and UGV-Ouster with statistical
 236 outlier removal and manual segmentation. This enables users interested in plot-wise data to directly use our dataset without any
 237 further processing.

238 To further improve the usability of our large dataset, we also provide a sample of our data for download, which includes all
 239 LAI and biomass measurements, as well as data from a single plot (plot ID 198) for a single time point (~14.06.2023) for all
 240 data packages. Additionally, we also provide a sample of plot-wise data of the aforementioned date and plot. To assist with
 241 downloading our dataset, we provide a user interface on our website at [https://www.ipb.uni-bonn.de/data/Mu](https://www.ipb.uni-bonn.de/data/MuST-C/)
 242 [ST-C/](https://www.ipb.uni-bonn.de/data/MuST-C/) as well as plain text files containing the file URLs for automated downloads in our GitHub repository.

243 Technical Validation

244 Sensor Data and Georeferencing

245 We verified the quality of our dataset’s georeferencing of raster orthophotos and point clouds. For the orthophotos, we validated
 246 the georeferencing across time as well as across sensors (UAV1-RGB, UAV2-RGB, UAV3-RGB, and UAV3-MS) by checking
 247 the consistency of the GCP locations. To this end, we selected three GCPs, and selected at least three orthophotos from each
 248 sensor where the GCPs are visible. We manually marked the location of each GCP in each orthophoto from all sensors, shown
 249 in Fig. 11, indicating that the alignment of the GCP locations in most orthophotos across sensors and different collection dates
 250 is within the expected range. For each sensor, the location error, i.e., mean distance to the actual GCP location, is 0.7 cm for
 251 UAV1-RGB, 13.0 cm for UAV2-RGB, 2.3 cm for UAV3-RGB, and 1.9 cm for UAV3-MS. The error for UAV2-RGB is higher
 252 than that of other sensors because GCPs were not used for their structure from motion optimisation. Overall, the standard
 253 deviation of each GCP is at the centimeter level, which is sufficient for most phenotyping use cases.

254 For the point clouds, Fig. 12(a) illustrates the alignment of the point clouds from different sensors and shows that the point
 255 clouds are well aligned, indicating the validity of each georeferenced point cloud. The stick with the vertical experiment tag
 256 used to mark plots is fully aligned in all point clouds, with less than 10 cm discrepancy mostly along the z-axis. In Fig. 12(b),
 257 we show the good alignment of the point clouds across time, and similarly in Fig. 12(c), we show the good alignment of

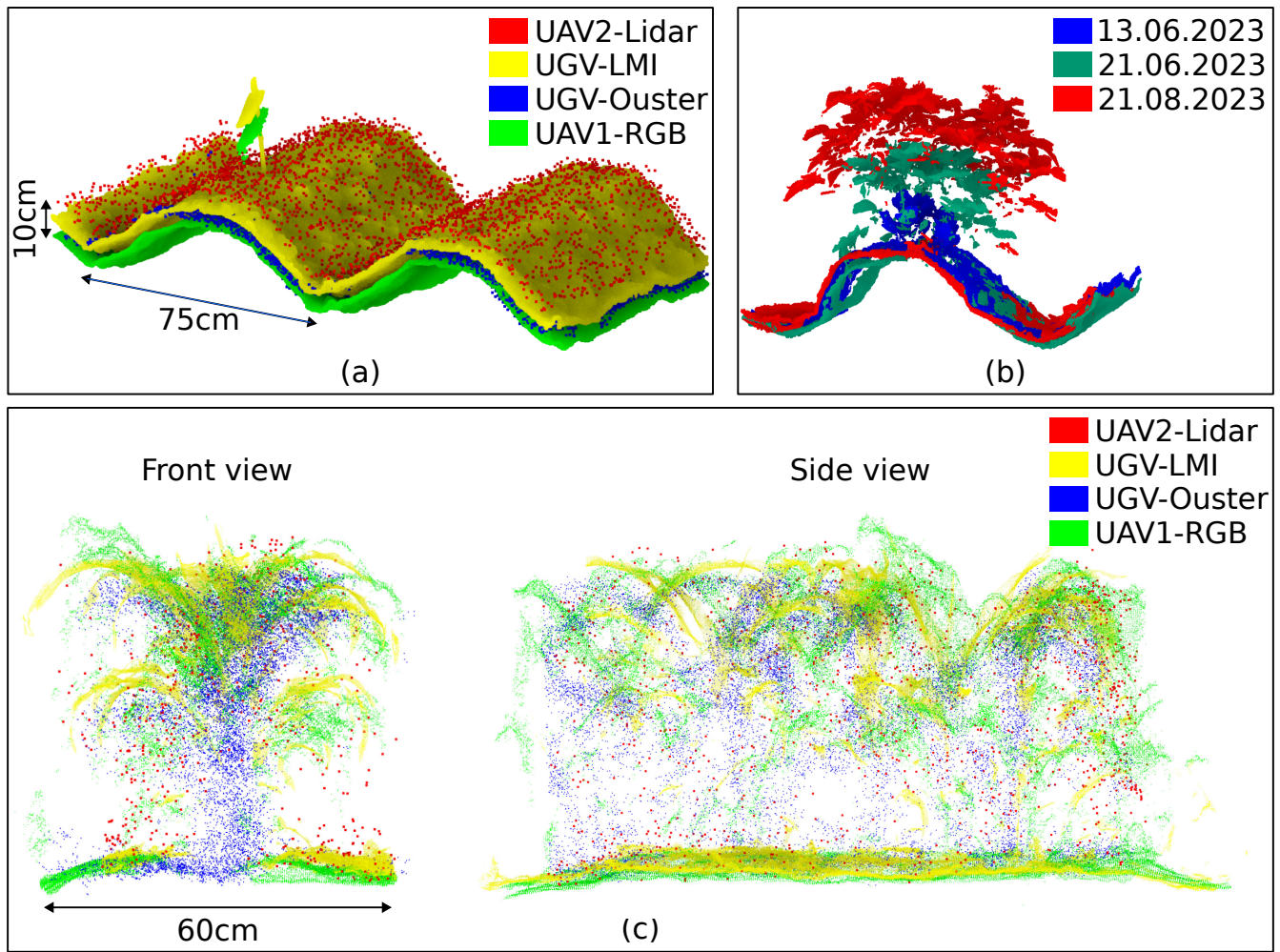


Figure 12. Point clouds of the potato plots (a) across different sensors and (b) over time. In (a), when the potatoes were just sown, we show the point clouds from **UAV2-Lidar** in red, **UGV-LMI** in yellow, **UGV-Ouster** in blue, and **UAV1-RGB** in green. The alignment in X and Y direction is almost perfect, with the undulation of the soil (75 cm row width) and the experiment tagging stick. Between the point clouds, there is a small discrepancy of less than 10 cm in the Z direction. In (b), we show the point clouds from **UGV-LMI** for the same potato plant across three dates (13.06., 21.06., and 21.08.) to show the alignment over time with our georeferenced sensor data. In (c), we show the point clouds of three maize plants from the front (along a row) and the side. The clouds have been generated from different sensor data, taken on the same day. The variations in density and distribution of points between sensors are shown here.

258 point clouds across sensors. In addition, the georeferencing accuracy of the **UAV2-Lidar** system has been investigated in
 259 our prior work³⁵. For **UGV-LMI** and **UGV-Ouster**, we registered and georeferenced the point clouds by fusing the SBG
 260 IMU and GNSS position and heading data using a graph-based pose optimization approach as described in our prior work³⁰,
 261 which results in a georeferencing accuracy of about 1-2 cm, where the repeatability of a single LMI laser line measurement
 262 is reported by LMI Technologies by 12 micrometers ([https://lmi3d.com/wp-content/uploads/2020/02/D](https://lmi3d.com/wp-content/uploads/2020/02/DATASHEET_Gocator_2490_US_WEB.pdf)
 263 [ATASHEET_Gocator_2490_US_WEB.pdf](https://lmi3d.com/wp-content/uploads/2020/02/DATASHEET_Gocator_2490_US_WEB.pdf)) and the Ouster OS1 range precision is specified with 1 cm at a range from
 264 1-20m (<https://data.ouster.io/downloads/datasheets/datasheet-revd-v2p0-os1.pdf>).

265 LAI Reference Measurements

266 We validated the LAI measurements from the SunScan with destructive measurements. Fig. 13 plots the LAI measured using
 267 SunScan and destructive measurements on similar dates, i.e., at most one day apart, to show the correlation between the two
 268 data types with the R^2 of 0.82 and root mean square error (RMSE) of 0.78. Where available, we report the LAI of the area
 269 where crops were sown; see the readme of **md_SunScan** for further details. The correlation plot indicates a strong agreement
 270 between destructive measurements and SunScan measurements.

271 However, the SunScan and destructive LAI measurements have some discrepancies, likely due to the following points. Firstly,

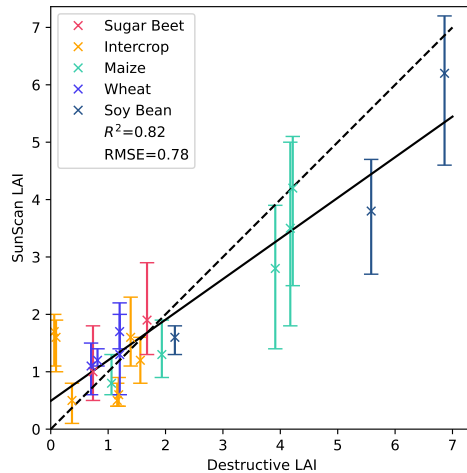


Figure 13. SunScan validation plot of LAI measured using SunScan against LAI measured with destructive measurements, with RMSE of 0.78 and R^2 of 0.82. The error bars for the SunScan measurements indicate the minimum and maximum measurements.

272 the plots were heterogeneous, particularly in maize and soybeans, leading to a high variance in the SunScan measurements and
 273 deviation between SunScan and destructive measurements. We took multiple repeated measurements in the plot with SunScan
 274 at different locations to fully capture the heterogeneity of the plot, but destructive measurements were taken only from one area
 275 per sample, which may not fully reflect the whole plot. We marked the location where each destructive measurement was taken
 276 in a shapefile `md_DestructiveSHP` for future LAI retrieval usage.

277 Secondly, SunScan measures LAI with PAR sensors and does not distinguish between green and brown vegetation, while
 278 destructive measurements only measure the green parts of leaves. This difference in measurements leads to higher SunScan
 279 measurements for the later developmental stages of wheat, both in single crop plots and intercrop plots, as the wheat senesces
 280 and sheds its lower leaves (heading and ripening).

281 Usage Notes

282 The MuST-C dataset can be used to estimate phenotypic traits, and here we illustrate this with an example use case for LAI
 283 estimation. Moreover, our dataset comprises data from multiple sensors, where we can obtain different phenotypic traits
 284 from each sensor using state-of-the-art methods. Here, we leverage RGB images for crop-weed segmentation, plant instance
 285 counting, and leaf detection, multispectral reflectance orthophotos for vegetation indices extraction, and point clouds for plant
 286 height and leaf angle estimation. While these methods leverage the strengths of each sensor, our dataset is aligned over time
 287 and across sensor modalities so that we can transform and merge these extracted traits from one sensor to another.

288 LAI Estimation

289 In our dataset, we measured the LAI values using a SunScan sensor and destructive sampling (Fig. 13). One of the use cases for
 290 this data set is to non-destructively derive LAI data from other sensor modalities. We exemplify this approach in the derivation
 291 of LAI from UAV Lidar data using Beer's Law³⁶. We used ray tracing to derive the probability of a laser ray being absorbed
 292 within the canopy and linked this to the LAI of the crop. Fig. 14 shows the result in comparison with the data from the SunScan
 293 sensor. Other possible methods use multi-view geometry approaches based on the images¹⁰ or direct modelling of the plant
 294 structure⁷.

295 Plant Counting

296 In addition to LAI estimation, several phenotypic traits and auxiliary information can be extracted using deep learning methods.
 297 Firstly, from the RGB images (e.g., Fig. 15(a)), we can obtain the plant count of a given plot using panoptic segmentation
 298 methods³⁷. Fig. 15(b)(c) shows the results of a panoptic segmentation method¹⁶ trained on a labeled dataset⁹, on an RGB
 299 image from MuST-C UAV1-RGB. Qualitatively, the method can perform plant counting relatively well despite using weights
 300 trained on a different dataset.

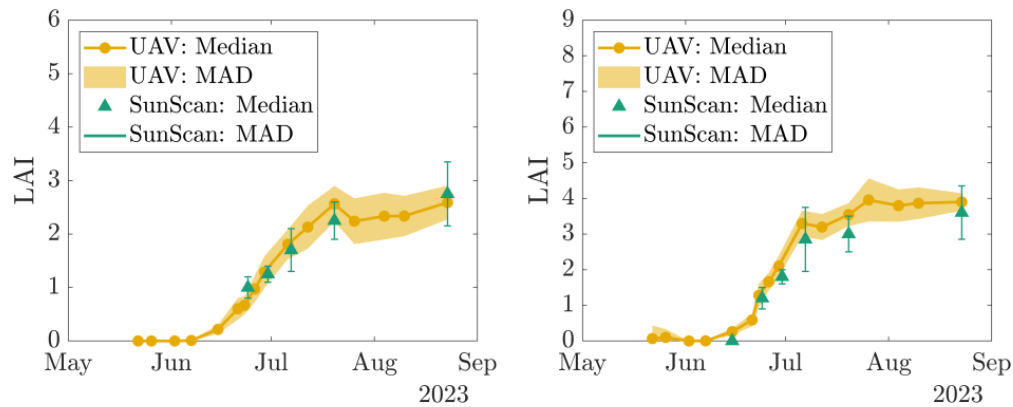


Figure 14. Example results of LAI from **UAV2-Lidar** data over several dates. We show the median and Mean Absolute Deviation (MAD) of the LAI estimated from **UAV2-Lidar** data and reference measurements from SunScan for maize (left) and sugar beet (right).

301 Crop Leaves Extraction

302 Several phenotypic traits and phenological development (expressed with the BBCH scale³⁸) are related to the leaves of the
 303 crop, leaf length and width, and leaf angle. To assist in extracting these traits, we can first detect individual leaves of the crop.
 304 In Fig. 15(d), we show an example of instance segmentation³⁹, which includes segments of individual leaf instances.

305 Vegetation Indices

306 Vegetation indices are useful for use cases such as LAI estimation¹⁴, vegetation classification⁴⁰, biomass estimation⁴¹, and so
 307 on. We can extract these vegetation indices using the multispectral and RGB products of our dataset. As an example, from
 308 the multispectral data of **UAV3-MS**, we extracted vegetation indices such as NDVI⁴², NDRE⁴³, EVI⁴⁴, and OSAVI⁴⁵, shown
 309 in Fig. 15(e).

310 Plant Height Extraction

311 The plant heights can be extracted from all point clouds by approximating a ground surface and calculating the differences to
 312 the ground (see Fig. 15(f)). To provide height values on plot level, mostly the mean of points above the 95th percentile of all
 313 height values in the crop for each plot is used⁴⁶.

314 Leaf Angle Estimation

315 The orientation of the leaf surfaces of plants is often referred to as 'leaf angle distribution' and determines how the canopy
 316 intercepts light. It is a crucial parameter in crop modelling and breeding, as it influences photosynthesis, biomass accumulation,
 317 and water-use efficiency. While there is no commonly used sensor to measure the leaf angles in field environments, the leaf angle
 318 distribution can be estimated using the high-resolution point clouds from the UGV-based triangulation scanners⁷. Fig. 15(g)
 319 shows the local surface orientation for the points of some sugar beet plants.

320 Code Availability

321 The custom Python code for loading the MuST-C dataset, processing the leaf area destructive measurements, converting
 322 multispectral orthophotos, and plotting the graphs in Fig. 8, Fig. 9, and Fig. 13 is made publicly available at <https://github.com/PRBonn/MuST-C>. We also provide a developer's kit to process our dataset (e.g., to organize the data at
 323 the plot level) in the same GitHub repository.
 324

325 Data Availability

326 As mentioned in the section on Data Records, our data is available for download at our data repository <https://doi.org/10.60507/FK2/OX9XTM>³⁴, which follows the nomenclature conventions from Fig. 10.
 327

328 References

- 329 1. Schmidhuber, J. & Tubiello, F. N. Global food security under climate change. *Proc. Natl. Acad. Sci.* **104**, 19703–19708,
 330 <https://doi.org/10.1073/pnas.0701976104> (2007).

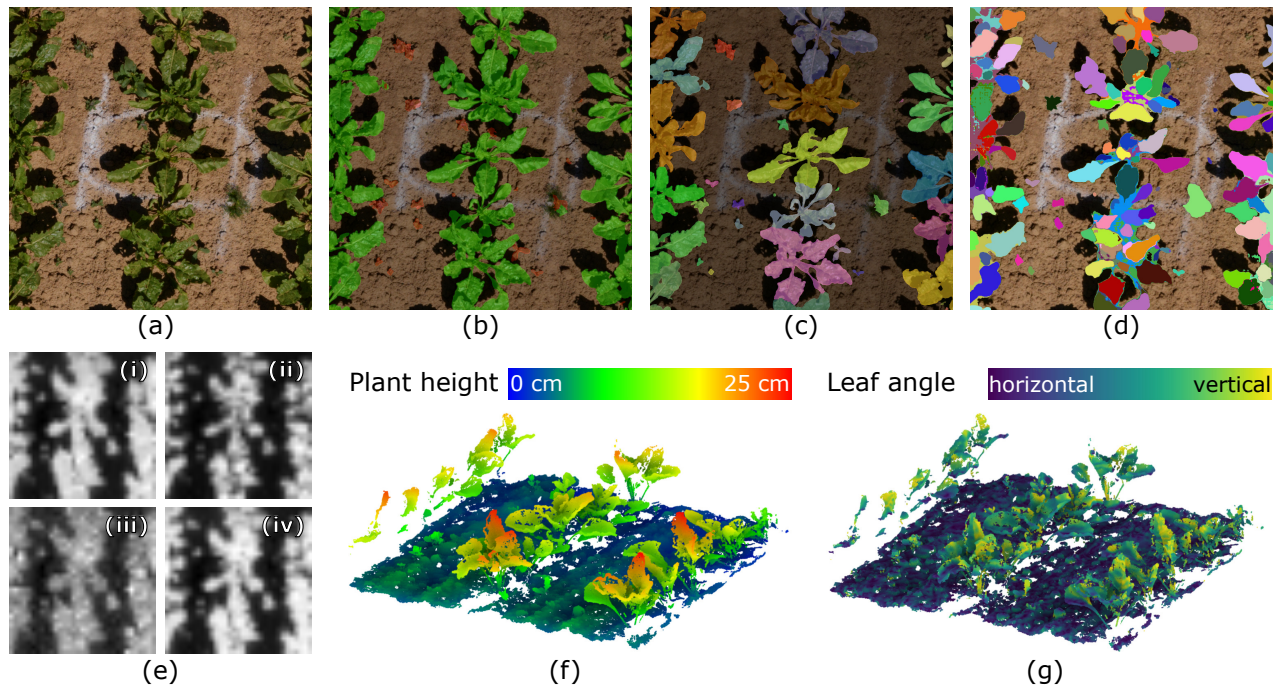


Figure 15. By leveraging the strengths of each sensor, our multi-sensor dataset enables several use cases such as (b) crop-weed semantic segmentation (c) plant count, and (d) leaf segmentation from RGB images (a), (e) vegetation indices ((i) NDVI, (ii) EVI, (iii) NDRE, and (iv) OSAVI) from multispectral images, and (f) plant height and (g) leaf angle from point clouds.

- 331 2. Wijerathna-Yapa, A. & Pathirana, R. Sustainable Agro-Food Systems for Addressing Climate Change and Food Security. *Agriculture* **12**, 1554, <https://doi.org/10.3390/agriculture12101554> (2022).
- 332
- 333 3. Reynolds, M. *et al.* Breeder friendly phenotyping. *Plant Sci.* **295**, 110396, <https://doi.org/10.1016/j.plantsci.2019.110396>
- 334 (2020).
- 335 4. Watt, M. *et al.* Phenotyping: New Windows into the Plant for Breeders. *Annu. Rev. Plant Biol.* **71**, 689–712, <https://doi.org/10.1146/annurev-arplant-042916-041124> (2020).
- 336
- 337 5. Araus, J. L. & Cairns, J. E. Field high-throughput phenotyping: the new crop breeding frontier. *Trends Plant Sci.* **19**,
- 338 52–61, <https://doi.org/10.1016/j.tplants.2013.09.008> (2014).
- 339 6. Hennecke, F., Bömer, J. & Heim, R. H. Modification of an automated precision farming robot for high temporal resolution
- 340 measurement of leaf angle dynamics using stereo vision. *MethodsX* **14**, 103169, <https://doi.org/10.1016/j.mex.2025.103169>
- 341 (2025).
- 342 7. Stausberg, L., Jost, B., Klingbeil, L. & Kuhlmann, H. A 3D Surface Reconstruction Pipeline for Plant Phenotyping. *Remote*
- 343 *Sens.* **16**, 4720, <https://doi.org/10.3390/rs16244720> (2024).
- 344 8. Marks, E. *et al.* BonnBeetClouds3D: A Dataset Towards Point Cloud-Based Organ-Level Phenotyping of Sugar Beet
- 345 Plants Under Real Field Conditions. In *Proc. of the IEEE/RSJ Intl. Conf. on Intelligent Robots and Systems (IROS)*,
- 346 <https://doi.org/10.1109/IROS58592.2024.10802820> (2024).
- 347 9. Weyler, J. *et al.* PhenoBench — A Large Dataset and Benchmarks for Semantic Image Interpretation in the Agricultural
- 348 Domain. *IEEE Trans. on Pattern Analysis Mach. Intell. (T-PAMI)* **46**, 9583–9594, <https://doi.org/10.1109/TPAMI.2024.3419548>
- 349 (2024).
- 350 10. Roth, L., Aasen, H., Walter, A. & Liebisch, F. Extracting leaf area index using viewing geometry effects—A new
- 351 perspective on high-resolution unmanned aerial system photography. *ISPRS J. Photogramm. Remote Sens.* **141**, 161–175,
- 352 <https://doi.org/10.1016/j.isprsjprs.2018.04.012> (2018).
- 353 11. Raj, R. *et al.* Leaf area index estimation using top-of-canopy airborne RGB images. *Int. J. Appl. Earth Obs. Geoinformation*
- 354 **96**, 102282, <https://doi.org/10.1016/j.jag.2020.102282> (2021).

- 355 12. Zermas, D., Morellas, V., Mulla, D. & Papanikolopoulos, N. Estimating the Leaf Area Index of Crops Through the
356 Evaluation of 3D Models. In *Proc. of the IEEE/RSJ Intl. Conf. on Intelligent Robots and Systems (IROS)*, <https://doi.org/10.1109/IROS.2017.8206517> (2017).
357
- 358 13. Chakhvashvili, E. *et al.* LAI and Leaf Chlorophyll Content Retrieval Under Changing Spatial Scale Using a UAV-
359 Mounted Multispectral Camera. In *Proc. of the IEEE Intl. Geoscience and Remote Sens. Symposium (IGARSS)*, <https://doi.org/10.1109/IGARSS46834.2022.9883446> (2022).
360
- 361 14. Shafian, S. *et al.* Unmanned aerial systems-based remote sensing for monitoring sorghum growth and development. *PLoS*
362 *One* **13**, 1–15, <https://doi.org/10.1371/journal.pone.0196605> (2018).
- 363 15. Deery, D. M. *et al.* Ground-Based LiDAR Improves Phenotypic Repeatability of Above-Ground Biomass and Crop Growth
364 Rate in Wheat. *Plant Phenomics* **2020**, 8329798, <https://doi.org/10.34133/2020/8329798> (2020).
- 365 16. Weyler, J., Läbe, T., Behley, J. & Stachniss, C. Panoptic Segmentation with Partial Annotations for Agricultural Robots.
366 *IEEE Robotics Autom. Lett. (RA-L)* **9**, 1660–1667, <https://doi.org/10.1109/LRA.2023.3346760> (2024).
- 367 17. Fang, Y. *et al.* An automatic method for counting wheat tiller number in the field with terrestrial LiDAR. *Plant Methods*
368 **16**, 132, <https://doi.org/10.1186/s13007-020-00672-8> (2020).
- 369 18. Roggiolani, G. *et al.* Hierarchical Approach for Joint Semantic, Plant Instance, and Leaf Instance Segmentation in the
370 Agricultural Domain. In *Proc. of the IEEE Intl. Conf. on Robotics & Automation (ICRA)*, <https://doi.org/10.1109/ICRA48891.2023.10160918> (2023).
371
- 372 19. Weyler, J., Magistri, F., Seitz, P., Behley, J. & Stachniss, C. In-Field Phenotyping Based on Crop Leaf and Plant Instance
373 Segmentation. In *Proc. of the IEEE Winter Conf. on Applications of Computer Vision (WACV)*, <https://doi.org/10.1109/WACV51458.2022.00302> (2022).
374
- 375 20. Dreier, A., Lopez, G., Bajracharya, R., Kuhlmann, H. & Klingbeil, L. Structural wheat trait estimation using uav-based
376 laser scanning data: Analysis of critical aspects and recommendations based on a case study. *Precis. Agric.* **26**, 18,
377 <https://doi.org/10.1007/s11119-024-10202-4> (2025).
- 378 21. Marks, E., Magistri, F. & Stachniss, C. Precise 3D Reconstruction of Plants from UAV Imagery Combining Bundle
379 Adjustment and Template Matching. In *Proc. of the IEEE Intl. Conf. on Robotics & Automation (ICRA)*, <https://doi.org/10.1109/ICRA46639.2022.9811358> (2022).
380
- 381 22. Wilke, N. *et al.* Assessment of plant density for barley and wheat using uav multispectral imagery for high-throughput
382 field phenotyping. *Comput. Electron. Agric.* **189**, 106380, <https://doi.org/10.1016/j.compag.2021.106380> (2021).
- 383 23. Madec, S. *et al.* VegAnn, Vegetation Annotation of multi-crop RGB images acquired under diverse conditions for
384 segmentation. *Sci. Data* **10**, 302, <https://doi.org/10.1038/s41597-023-02098-y> (2023).
- 385 24. Marks, E. *et al.* High Precision Leaf Instance Segmentation in Point Clouds Obtained Under Real Field Conditions. *IEEE*
386 *Robotics Autom. Lett. (RA-L)* **8**, 4791–4798, <https://doi.org/10.1109/LRA.2023.3288383> (2023).
- 387 25. Stevens, S. *et al.* BioCLIP: A vision foundation model for the tree of life. In *Proc. of the IEEE/CVF Conf. on Computer*
388 *Vision and Pattern Recognition (CVPR)*, <https://doi.org/10.1109/CVPR52733.2024.01836> (2024).
- 389 26. Gu, J. *et al.* Bioclip 2: Emergent properties from scaling hierarchical contrastive learning. **arXiv:2505.23883** (2025).
- 390 27. Yang, C.-H. *et al.* BioTrove: A Large Curated Image Dataset Enabling AI for Biodiversity. In *Proc. of the Conf. on Neural*
391 *Information Processing Systems (NeurIPS)* (2024).
- 392 28. Nahian, M. J. A., Ghosh, T., Sheikhi, F. & Maleki, F. Agri-FM+: A Self-Supervised Foundation Model for Agricultural
393 Vision. In *Proc. of the IEEE/CVF Conf. on Computer Vision and Pattern Recognition (CVPR) Workshops* (2025).
- 394 29. Benfenati, A., Causin, P., Oberti, R. & Stefanello, G. Unsupervised deep learning techniques for automatic detection of
395 plant diseases: reducing the need of manual labelling of plant images. *J. Math. Ind.* **13**, 5, <https://doi.org/10.1186/s13362-023-00133-6> (2023).
396
- 397 30. Esser, F. *et al.* Field Robot for High-Throughput and High-Resolution 3D Plant Phenotyping: Towards Efficient and
398 Sustainable Crop Production. *IEEE Robotics Autom. Mag. (RAM)* **30**, 20–29, <https://doi.org/10.1109/MRA.2023.3321402>
399 (2023).
- 400 31. Chakhvashvili, E., Siegmann, B., Bendig, J. & Rascher, U. Comparison of reflectance calibration workflows for a
401 UAV-mounted multi-camera array system. In *Proc. of the IEEE Intl. Geoscience and Remote Sens. Symposium (IGARSS)*,
402 <https://doi.org/10.1109/IGARSS47720.2021.9555143> (2021).

- 403 32. Esser, F., Tombrink, G., Cornelißen, A., Klingbeil, L. & Kuhlmann, H. System Calibration of a Field Phenotyping Robot
404 with Multiple High-Precision Profile Laser Scanners. In *Proc. of the IEEE Intl. Conf. on Robotics & Automation (ICRA)*,
405 <https://doi.org/10.1109/ICRA57147.2024.10610208>. (2024).
- 406 33. Watson, D. J. Comparative Physiological Studies on the Growth of Field Crops: I. Variation in Net Assimilation
407 Rate and Leaf Area between Species and Varieties, and within and between Years. *Annals Bot.* **11**, 41–76, <https://doi.org/10.1093/oxfordjournals.aob.a083148> (1947).
- 409 34. Chong, Y. L. *et al.* The multi-sensor and multi-temporal dataset of multiple crops for in-field phenotyping and monitoring.
410 *BonnData* <https://doi.org/10.60507/FK2/OX9XTM> (2025).
- 411 35. Dreier, A., Janßen, J., Kuhlmann, H. & Klingbeil, L. Quality Analysis of Direct Georeferencing in Aspects of Absolute
412 Accuracy and Precision for a UAV-Based Laser Scanning System. *Remote Sens.* **13**, 3564, <https://doi.org/10.3390/rs13183564> (2021).
- 414 36. Bailey, B. N. & Mahaffee, W. F. Rapid, high-resolution measurement of leaf area and leaf orientation using terrestrial
415 LiDAR scanning data. *Meas. Sci. Technol.* **28**, 064006, <https://doi.org/10.1088/1361-6501/aa5cfd> (2017).
- 416 37. Kirillov, A., He, K., Girshick, R., Rother, C. & Dollar, P. Panoptic segmentation. In *Proc. of the IEEE/CVF Conf. on*
417 *Computer Vision and Pattern Recognition (CVPR)*, <https://doi.org/10.1109/CVPR.2019.00963> (2019).
- 418 38. Lancashire, P. D. *et al.* A uniform decimal code for growth stages of crops and weeds. *Annals Appl. Biol.* **119**, 561–601,
419 <https://doi.org/10.1111/j.1744-7348.1991.tb04895.x> (1991).
- 420 39. Chong, Y. L. *et al.* Zero-Shot Semantic Segmentation for Robots in Agriculture. In *Proc. of the IEEE/RSJ Intl. Conf. on*
421 *Intelligent Robots and Systems (IROS)* (2025).
- 422 40. Milioto, A., Lottes, P. & Stachniss, C. Real-Time Semantic Segmentation of Crop and Weed for Precision Agriculture
423 Robots Leveraging Background Knowledge in CNNs. In *Proc. of the IEEE Intl. Conf. on Robotics & Automation (ICRA)*,
424 <https://doi.org/10.1109/ICRA.2018.8460962> (2018).
- 425 41. Banerjee, B. P., Spangenberg, G. & Kant, S. Fusion of spectral and structural information from aerial images for improved
426 biomass estimation. *Remote Sens.* **12**, 3164, <https://doi.org/10.3390/rs12193164> (2020).
- 427 42. Rouse, J. Monitoring the vernal advancement and retrogradation of natural vegetation. Tech. Rep., NASA Goddard Space
428 Flight Center (1973).
- 429 43. Barnes, E. *et al.* Coincident detection of crop water stress, nitrogen status and canopy density using ground based
430 multispectral data. In *Proc. of the Conf. on Precision Agriculture* (2000).
- 431 44. Huete, A. *et al.* Overview of the radiometric and biophysical performance of the MODIS vegetation indices. *Remote Sens.*
432 *Environ.* **83**, 195–213, [https://doi.org/10.1016/S0034-4257\(02\)00096-2](https://doi.org/10.1016/S0034-4257(02)00096-2) (2002).
- 433 45. Rondeaux, G., Steven, M. & Baret, F. Optimization of soil-adjusted vegetation indices. *Remote Sens. Environ.* **55**, 95–107,
434 [https://doi.org/10.1016/0034-4257\(95\)00186-7](https://doi.org/10.1016/0034-4257(95)00186-7) (1996).
- 435 46. Hütt, C., Bolten, A., Hüging, H. & Bareth, G. UAV LiDAR metrics for monitoring crop height, biomass and nitrogen
436 uptake: a case study on a winter wheat field trial. *J. Photogramm. Remote Sens. Geoinformation Sci.* **91**, 65–76,
437 <https://doi.org/10.1007/s41064-022-00228-6> (2023).

438 Acknowledgments

439 This work has been partially funded by the German Research Foundation under Germany's Excellence Strategy, EXC-2070 -
440 390732324 – PhenoRob.

441 The authors express their gratitude for the invaluable support and technical assistance provided by Hannah Becker, Arnaud
442 Kentsa, Silas Omondi, Michael Quarten, Cansu Beyaz, Svetlana Seliunina, and the team of Campus Klein-Altendorf, especially
443 to Magdalena Theisen, Patrick Hostnik, and Dr. Thorsten Kraska.

444 Author contributions statement

445 Y.L.C. — data acquisition, processing, analysis, validation, software, and writing. J.K. — project conception, data acquisition
446 and validation, site engineering, management, and writing. E.C. — project conception, data acquisition, processing, validation,
447 analysis, and writing. E. A. M. — data acquisition and processing, software, and writing. F. E. — data acquisition, processing,
448 validation, and writing. A. D. — data acquisition, processing, validation, and writing. R. A. R — data acquisition and
449 revision. K. W. — data acquisition, data processing, and writing. R. P. — experimental design, administration, resources. S.
450 B. — conceptualization, funding acquisition, and revision. O. M. — experimental design, administration, resources. U. R. —

451 administration, resources. H. K. — conceptualization, funding acquisition, and revision. C. S. — conceptualization, funding
452 acquisition, and revision. J. B. — conceptualization, writing, and revision. L. K. — conceptualization, writing, and revision.
453 All authors reviewed and approved the final manuscript.

454 **Competing interests**

455 The authors declare no competing interests.

CERTIFICATE OF REPRODUCIBILITY

The authors of this publication declare that:

- 1) The software related to this publication is distributed in the hope that it will be useful, support open research, and simplify the reproducibility of the results but it comes without any warranty and without even the implied warranty of merchantability or fitness for a particular purpose.
- 2) *Yue (Linn) Chong* primarily developed the implementation related to this paper. This was done on Ubuntu 24.04.4 LTS.
- 3) *Theodor Kapler* verified that the code can be executed on a machine that follows the software specification given in the Git repository available at:

<https://github.com/PRBonn/MuST-C>

- 4) *Theodor Kapler* verified that the experimental results presented in this publication can be reproduced using the implementation used at submission, which is labeled with a tag in the Git repository and can be retrieved using the command:

```
git checkout bc0631d
```